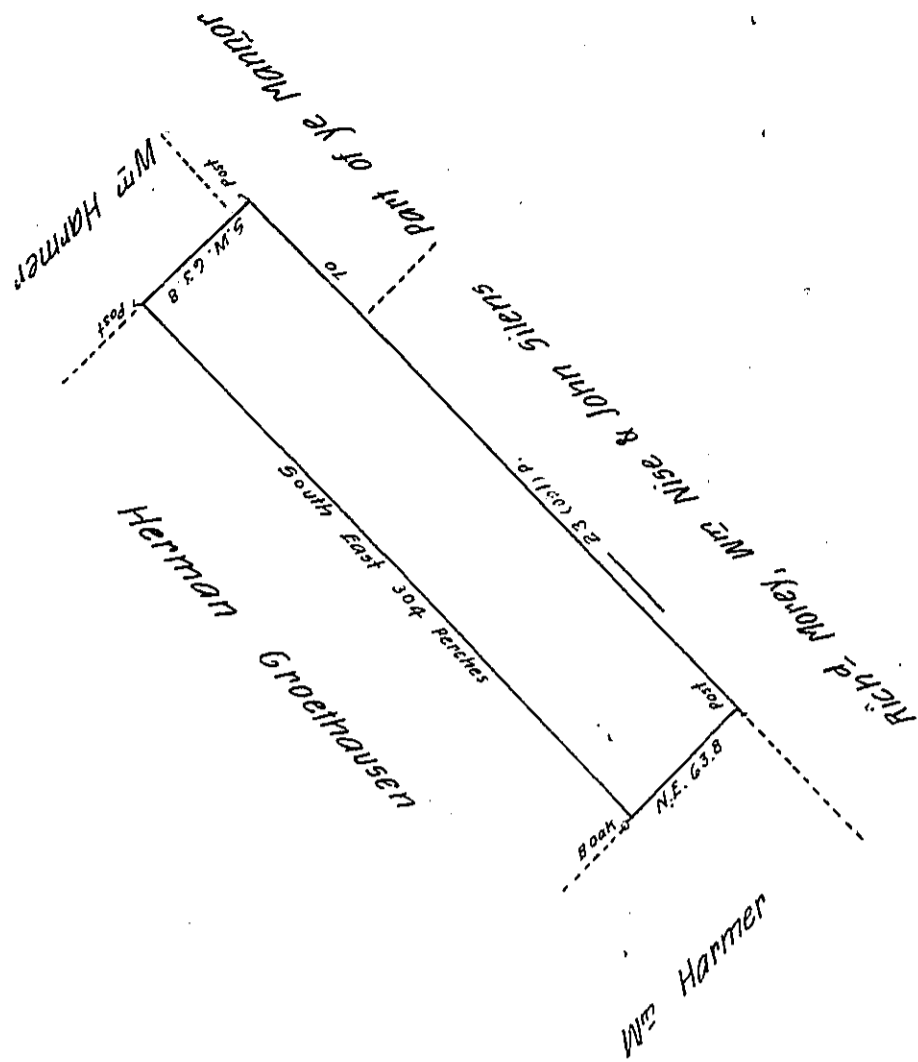


FORM No. 1.

63.8
304
2552
19140
1939 5/12/2.35
313



By virtue of a Warrant from the Proprietaries dated the 15th day of June 1736, surveyed to William Nise a tract of Land situate in the County of Philad^a, being part of the Mannor of Springfield Beginning at a Black Oak a Corner of Herman Groethausen's Land thence by land of William Harmer dece^d N.E. 63 perches & 8 tenths of a perch to a post. Thence by land of Richard Morey other land of ye s^d William Nise & Land of Thomas Silens N.W. 234 perches to a corner stone of s^d Silens land thence by part of the said Mannor N.W. 70 perches to a post thence by part of the said Mannor S.W. 5 perches to a small hickery a corner of a tract of land lately belonging to William Harman Deced. thence by ye same S.W. 58 perches & 8 tenths of a perch to a post a corner of Herman Groethausen's Land thence by the same S.E. 304 perches to the place of Beginning. Containing one hundred & twenty one acres and thirty five perches. Surveyed September 16th 1736 by

Nich^o Scull

IN TESTIMONY that the above is a copy of the original remaining on file in the Department of Internal Affairs of Pennsylvania, made conformably to an Act of Assembly approved the 16th day of February, 1833, I have hereunto set my Hand and caused the Seal of said Department to be affixed at Harrisburg, this fifth day of February 1906

Samuel R. ...
Secretary of Internal Affairs.